



High Power 11 b/g Access Point

FD-1009P10BG00AP



FEATURES

IEEE 802.11b/g compliant with 54Mbps high-speed data rate

Operation modes: AP, Client, WDS, AP+WDS

DHCP Server/Client

TCP protocol stack

Wireless users access control

Wireless security - 64/128bit WEP, WPA/WPA2, 802.1x and 802.11i, WPS

Wireless site survey

Universal Plug and Play, no complicated installation necessary

Quick and easy setup with Web-based management utility

Replaceable antenna allows user to replace higher gain antenna



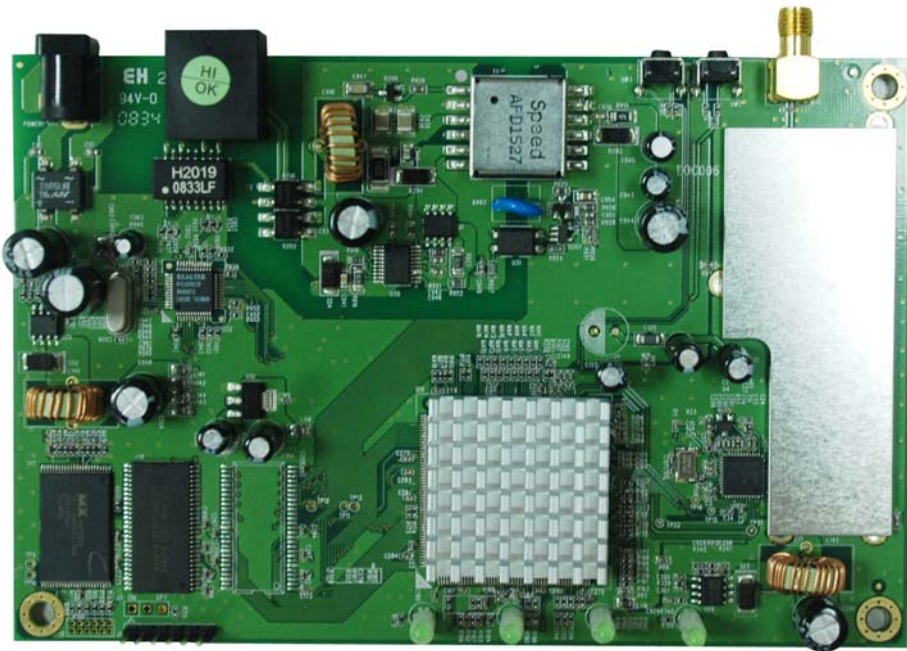
SPECIFICATIONS

Standard	IEEE 802.11g
	IEEE 802.11b
Frequency Band	2.400GHz ~ 2.4835GHz
Radio type	IEEE 802.11g: OFDM(64-QAM, 16-QAM, QPSK, BPSK)
	IEEE 802.11b: DSSS(CCK/DQPSK/DBPSK)
Data Rate	IEEE 802.11g: 54,48, 36, 24, 18, 12, 9 & 6Mbps; Auto-fallback
	IEEE 802.11b: 11, 5.5, 2 and 1 Mbps; Auto-fallback
Access Protocol	CSMA/CA
Number of operation channel	U.S. 1-11
	Japan 1-13,14
	Elsewhere Worldwide 1-13
Working Mode	Ad-Hoc or Infrastructure
Security	64/128bit WEP
	WPA(TKIP with IEEE 802.1x)
	WPA2(AES with IEEE 802.1x)
RF Output Power (Typical)	802.11b: up to 17 ±1 dBm
	802.11g: up to 14 ±1 dBm
Sensitivity	-68dBm @ 54Mbps
	-80dBm @ 11Mbps
Antenna	One detachable 2dbi antenna(SMAconnector)
Dimension (mm) & weight	165(L) x 118(W) x 27(H)
	245g
Humidity	10% ~ 90% (Non-condensing)
Operation & Storage Temperature	Operation: 0°C ~ 50°C
	Storage: -10°C ~ 60°C
Connector	One antenna connector
	One RJ-45 port for LAN
	Reset to default button
Power requirement	DC 9V/1A



Also We have as following specification of Access Point

PN	Description	Output	Antenna	Note
FD-8048P10BG00AP	PoE 48V, 800mW, 1Lan	b/g 28/24dBm	5dBi SMA	FCC, CE
PB-8048P14BG00AP	PoE 48V, 800mW, 1Lan	b/g 28/24dBm	Non	PCBA
PB-1012P14BG00AP	Normal Power 9V, 1Lan	b/g 17/14dBm	Non	PCBA



PB-8048P10BG00AP